

# CorrieandCo

INDEPENDENT SALES & LETTING AGENTS



## Flat 1 Cavendish House

Ulverston, LA12 7AD

Offers In The Region Of £185,000



2



1



1



C



# Flat 1 Cavendish House

Ulverston, LA12 7AD

## Offers In The Region Of £185,000



*This is a quirky and characterful two bedroom, split level apartment located in the heart of the market town of Ulverston with the added advantage of a shared outdoor space. This stylish and charming Grade II listed home has a wealth of original Victorian features, and is ideally situated to benefit from all that this buzzing festival town has to offer. The property has a huge amount of cellar space with planning permission to be converted into additional accommodation, offering lots of further potential. Briefly comprising of a vestibule from private entrance on Cavendish Street, with lovely original tiled flooring through to the main hall. From the hall you can access the beautiful lounge with high ceilings and traditional decorative fireplace. There is an extra-large double bedroom to the front, with the other double bedroom at the rear, and WC. Heading down to the lower ground floor you'll find a lovely modern kitchen and family bathroom. Two separate doors provide access to the same-level cellar and its unique convertible space. This superb home would be ideal for a number of buyers including first time buyers or investors.*

Accessed via its own private entrance from Cavendish Street, the property opens into a welcoming vestibule, where attractive original tiled flooring immediately hints at the character and charm found throughout this Grade II listed home. The vestibule leads into the main hallway, providing access to the principal accommodation.

The impressive lounge is a particularly inviting space, featuring high ceilings, period detailing and a traditional decorative fireplace that creates an attractive focal point. Large windows allow plenty of natural light to flood the room, enhancing the sense of space and character.

To the front of the property is an exceptionally spacious double bedroom, enjoying generous proportions and period features in keeping with the age of the building. A second double bedroom is positioned to the rear, offering comfortable and versatile accommodation suitable for guests, family members or a home office. Also located on this level is a convenient WC.

Stairs descend to the lower ground floor, where the stylish kitchen/diner has been thoughtfully fitted with a range of modern units and provides ample space for dining and entertaining. Adjacent to the kitchen is the family bathroom, fitted with a three-piece suite.

One of the property's most unique features is the extensive cellar accommodation, accessed from the lower ground floor via two separate doorways. Comprising multiple interconnected rooms, the cellar offers a remarkable amount of storage space and benefits from planning permission for conversion into additional living accommodation, presenting exciting potential for further development, subject to any necessary consents.

Externally, residents can enjoy access to a shared ginnel, while the property's central location places Ulverston's shops, cafés, restaurants and amenities right on the doorstep. Combining period elegance, quirky character and outstanding development potential, this is a truly distinctive home in the heart of this vibrant market town.

### Entrance Hall

extends to 26'3" (extends to 8.019)

### W/C

### Reception Room One

13'0" x 16'11" (3.965 x 5.172)

### Kitchen

7'10" x 13'6" (2.403 x 4.118)

### Stairway

### Bedroom One

13'6" x 14'5" (4.140 x 4.418)

### Bedroom Two

11'9" x 11'3" (3.592 x 3.440)

### Bathroom

8'3" x 5'2" (2.520 x 1.578)

### Cellar Room One

17'0" x 14'5" (5.200 x 4.409)

### Cellar Room Two

10'1" x 6'5" (3.086 x 1.972)

### Cellar Room Three

9'11" x 8'7" (3.041 x 2.632)

### Cellar Room Four

9'9" x 5'10" (2.990 x 1.796)

### Cellar Room Five

9'5" x 4'8" (2.871 x 1.444)

### Cellar Room Six

7'2" x 6'3" (2.196 x 1.917)

### Cellar Room Seven

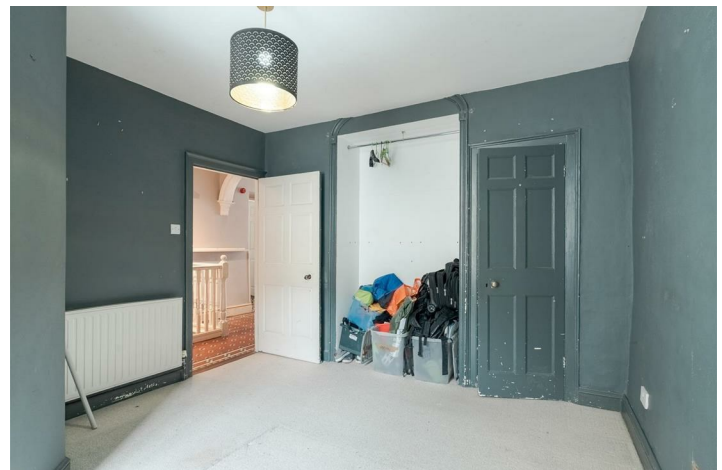
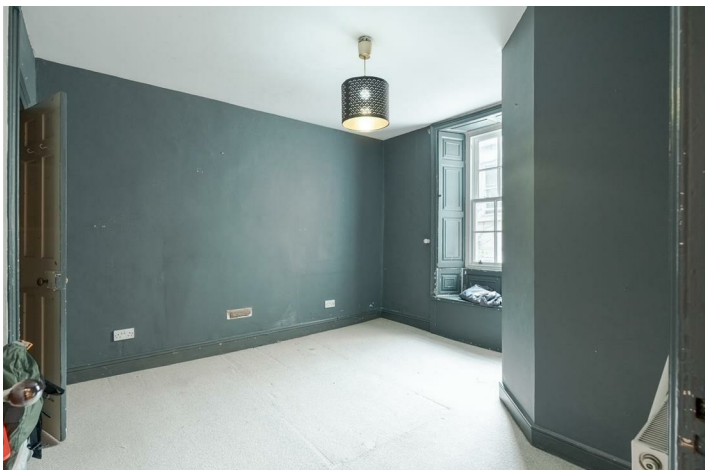
7'7" x 7'0" (2.323 x 2.149)

### Externally

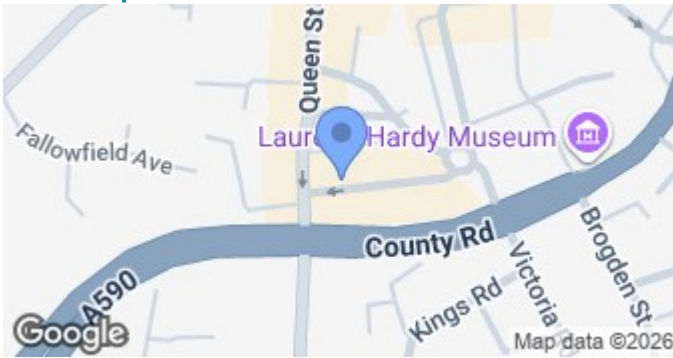


- Popular Location
- Grade 2 Listed Building
- Excellent First Home or Investment Opportunity
- Flexible Maintenance Charges

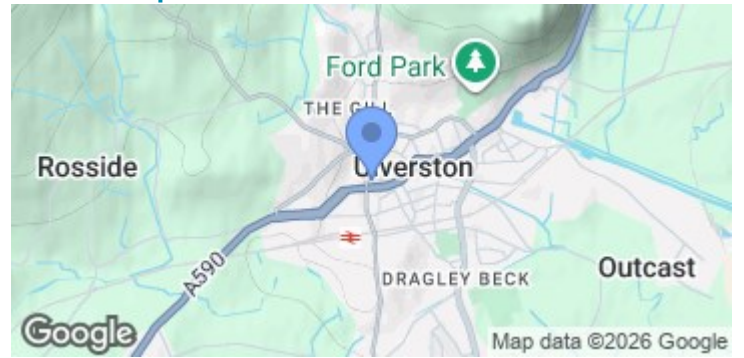
- Original Features
- Tax Band- B
- Shared Outdoor Space



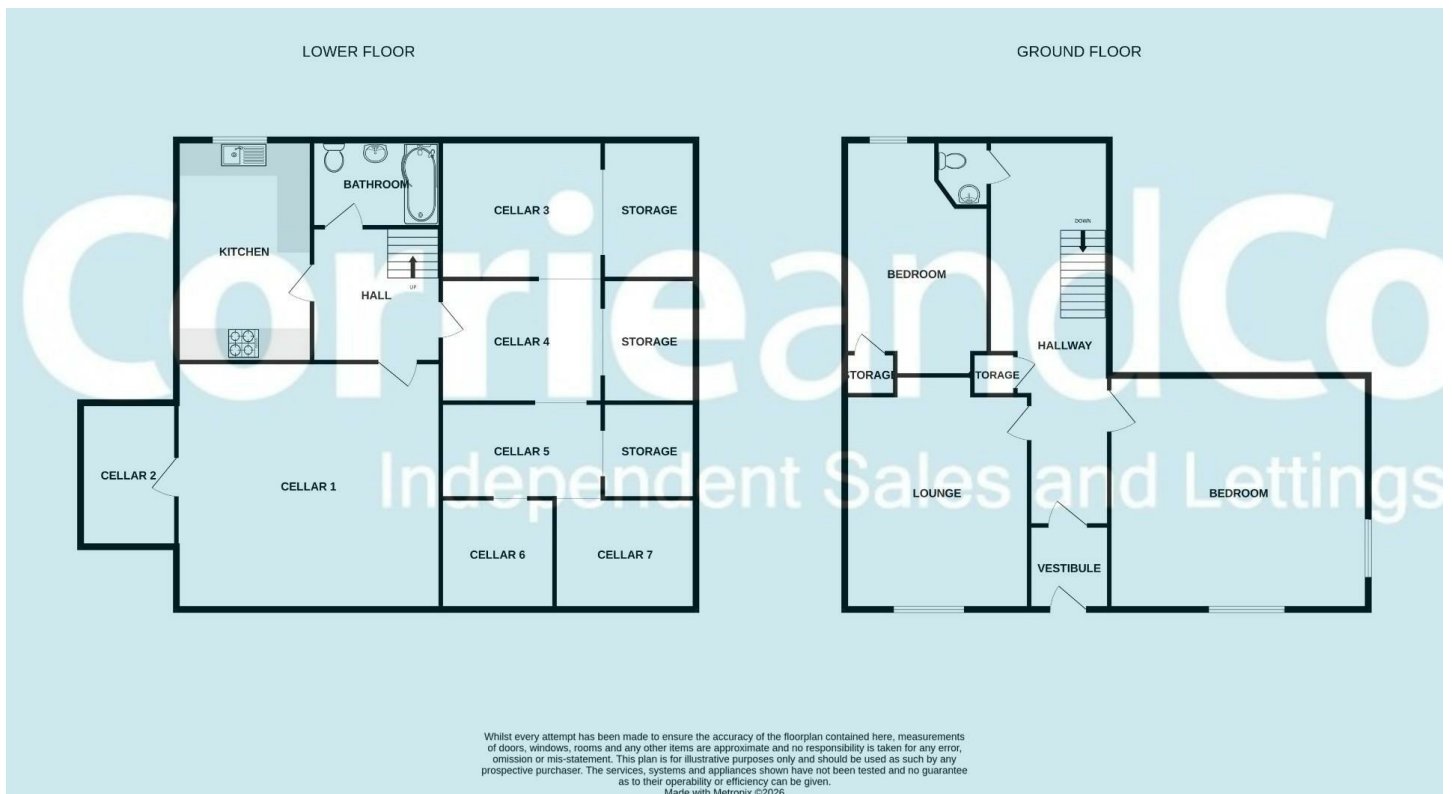
## Road Map



## Terrain Map



## Floor Plan



**We are local, family run business who are wholly independent which means we can recommend services to most suit your needs. Our aim is to provide quality advice and expertise at all times, so you can make an informed decision whether buying or selling.**

Estate agents are required by law to check a buyers /sellers identity to prevent Money Laundering and fraud. You do have to produce documents to prove your identity or address and information on your source of funds. Checking this information is a legal requirement to help safeguard your transaction, and failing to provide ID could cause delays. Corrie and Co, outsource these checks to speed up the process. The company does charge for such checks, please ask for more information and guidance on associated costs.

To ensure your move is stress free, we can help with Mortgage advice. We work alongside local Solicitors, offering competitive conveyancing services. Ask for further information.

Environmental Impact (CO <sub>2</sub> ) Rating		Current	Potential
Very environmentally friendly - lower CO <sub>2</sub> emissions			
(92 plus)	A		
(81-91)	B		
(69-80)	C		
(55-68)	D		
(39-54)	E		
(21-38)	F		
(1-20)	G		
Not environmentally friendly - higher CO <sub>2</sub> emissions			
England & Wales		EU Directive 2002/91/EC	

Energy Efficiency Rating		Current	Potential
Very energy efficient - lower running costs			
(92 plus)	A		
(81-91)	B		
(69-80)	C		
(55-68)	D		
(39-54)	E		
(21-38)	F		
(1-20)	G		
Not energy efficient - higher running costs			
England & Wales		71	77
		EU Directive 2002/91/EC	